

School Leaver Destination Return 2008 - 2009

City of Edinburgh

Alastair Paul

Team Leader

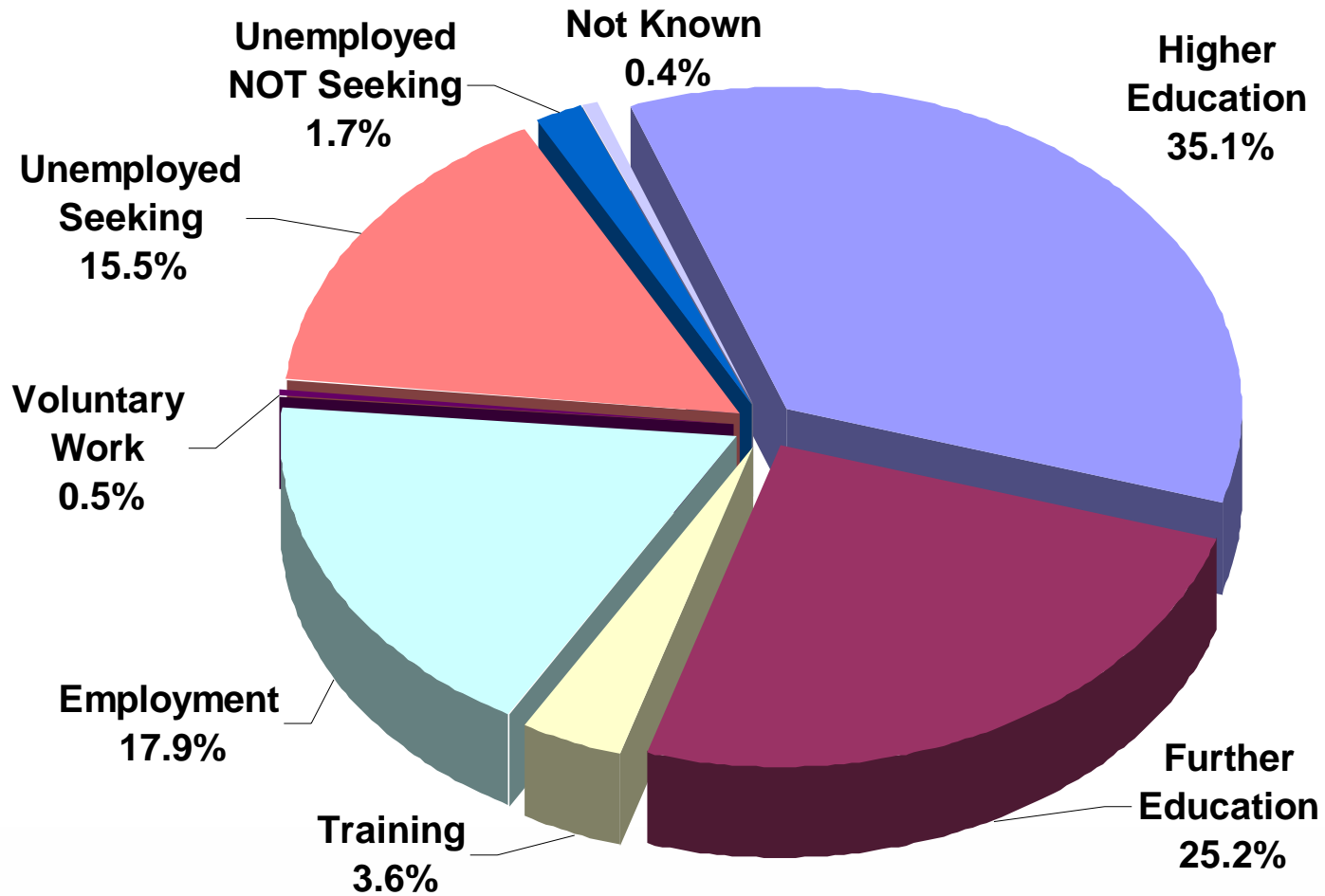
Background to the SLDR

||| Who is included in the SLDR?

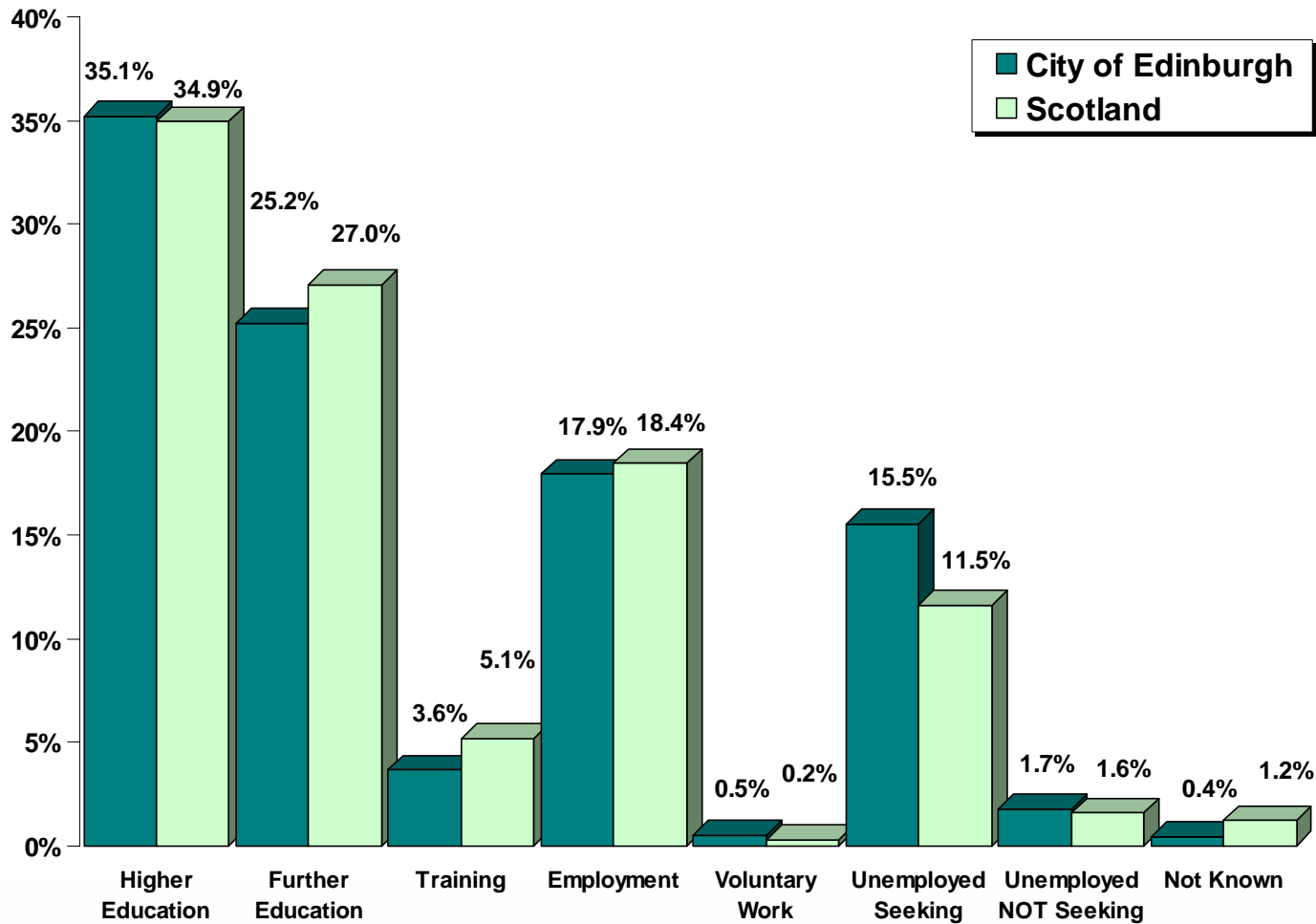
||| Why do we do it?

||| How do we collect the data?

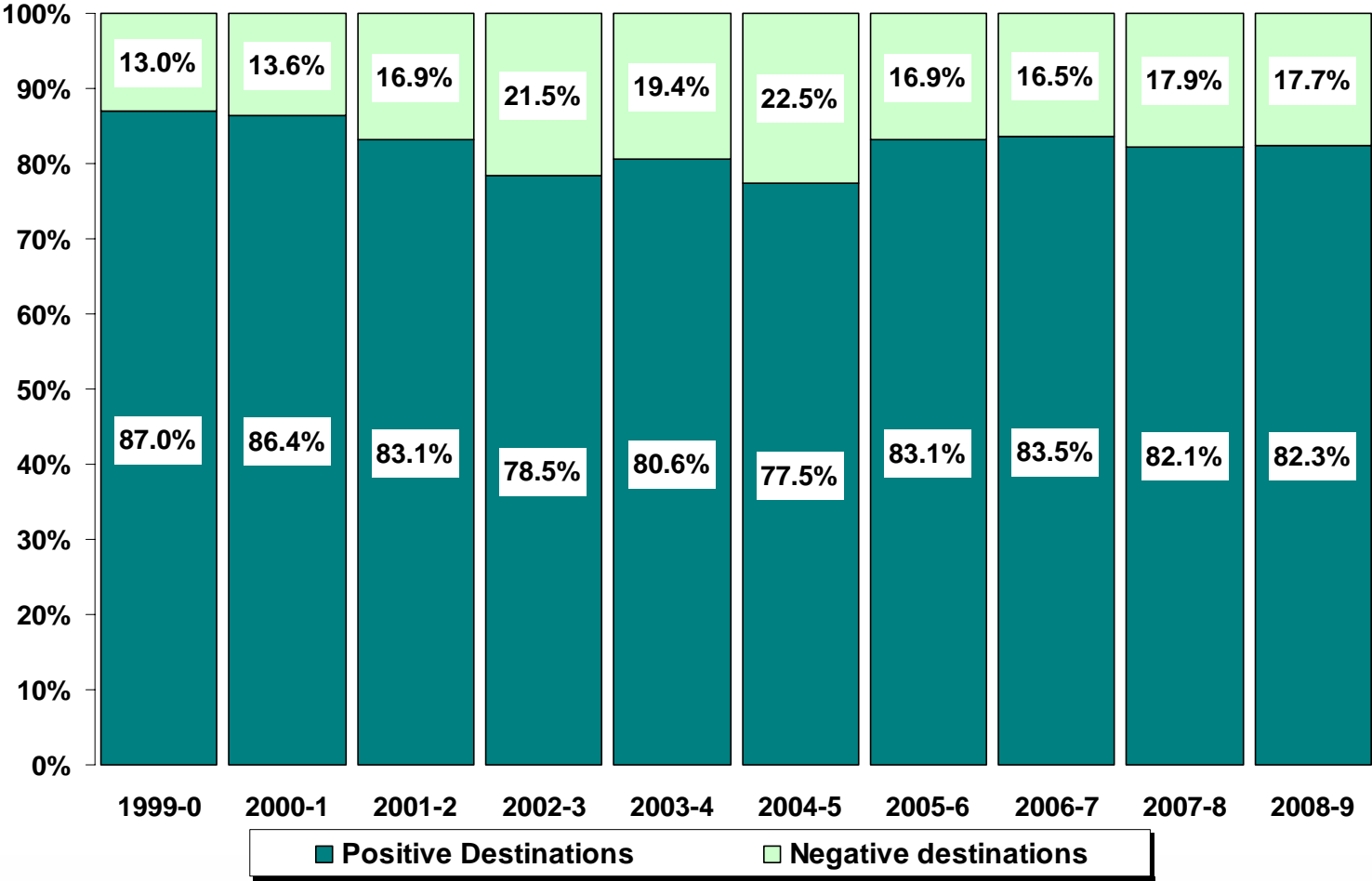
Local Authority Breakdown



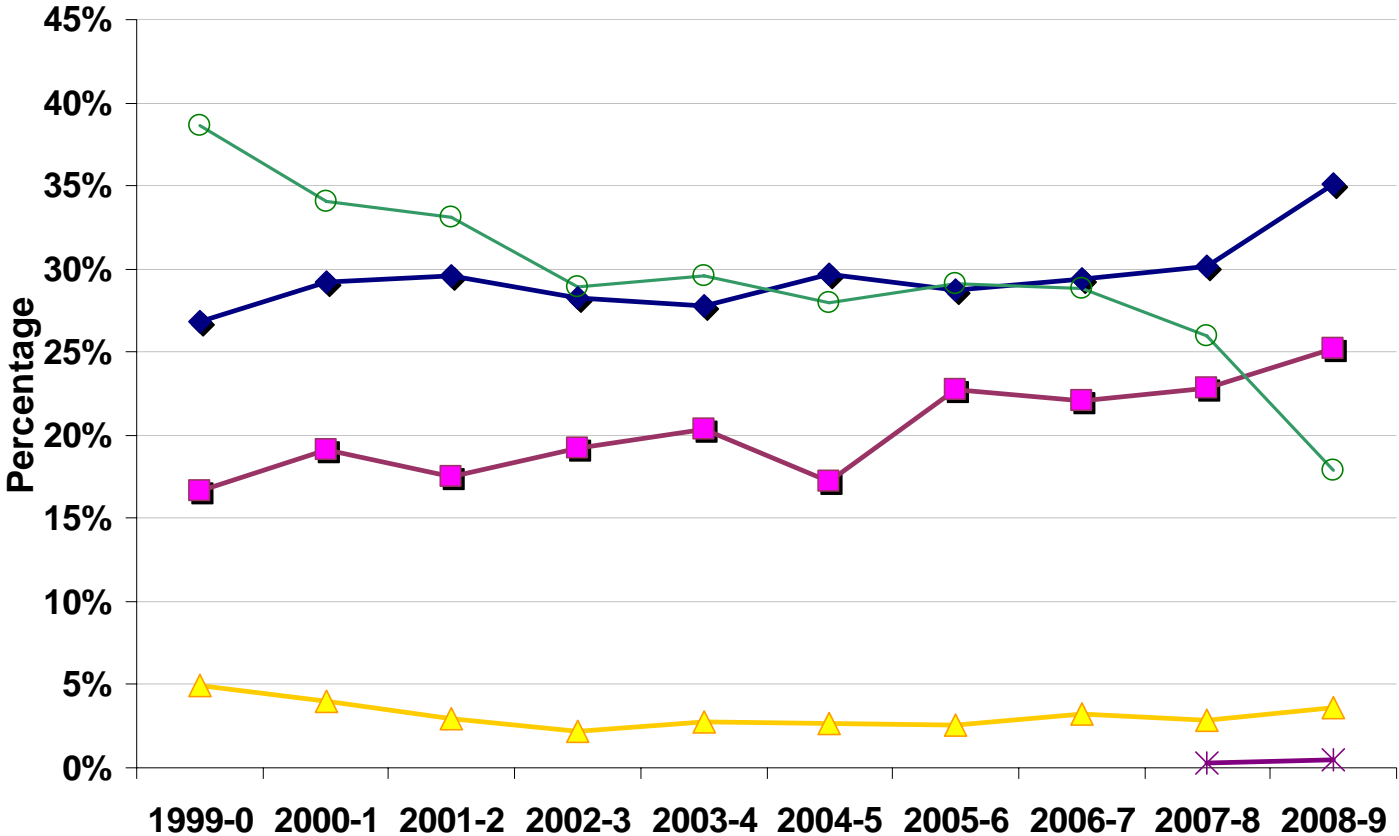
Local Authority / National Comparison



10 Year Trends – Positive / Negative

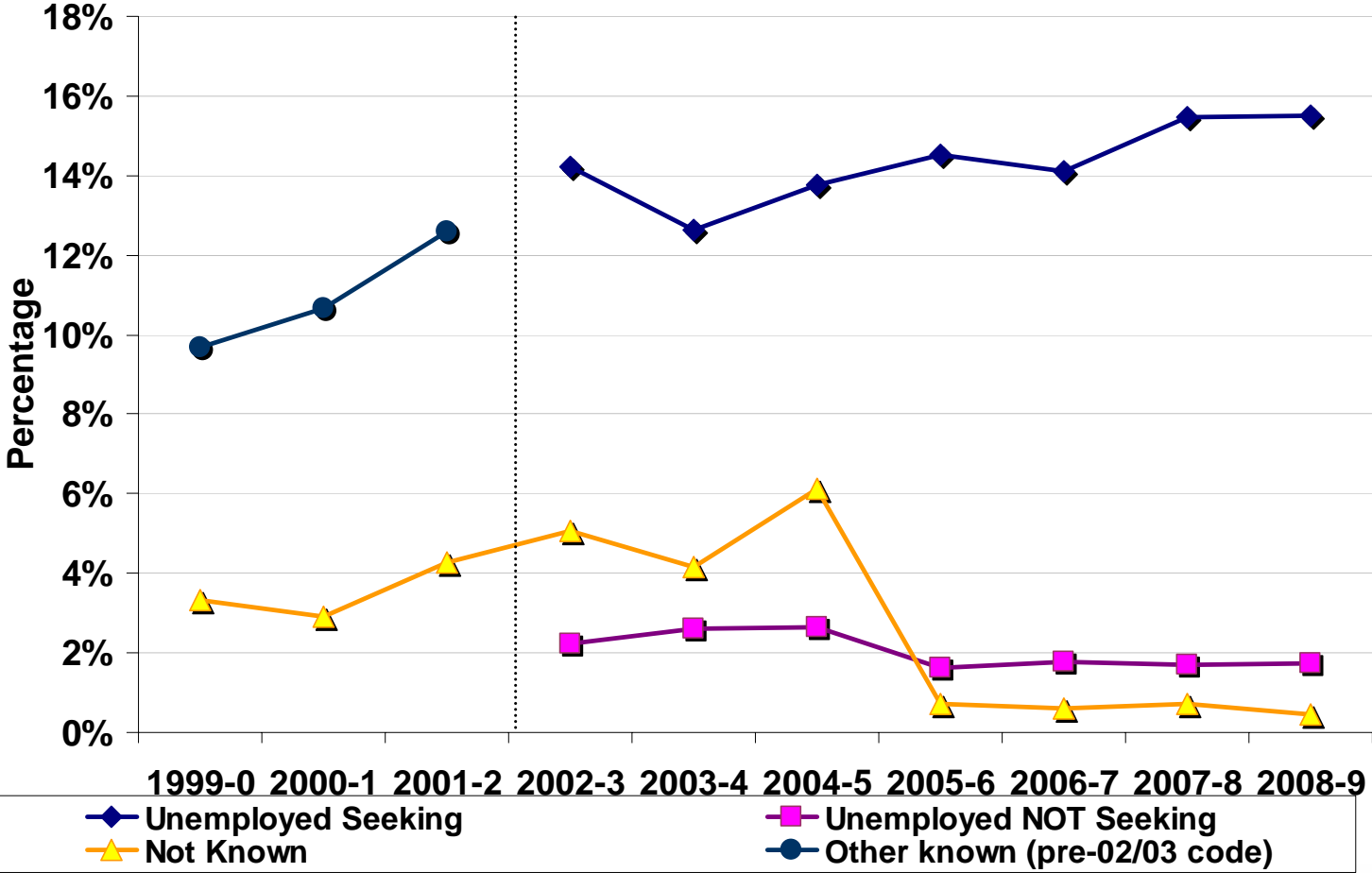


10 Year Trends – Positive Destinations

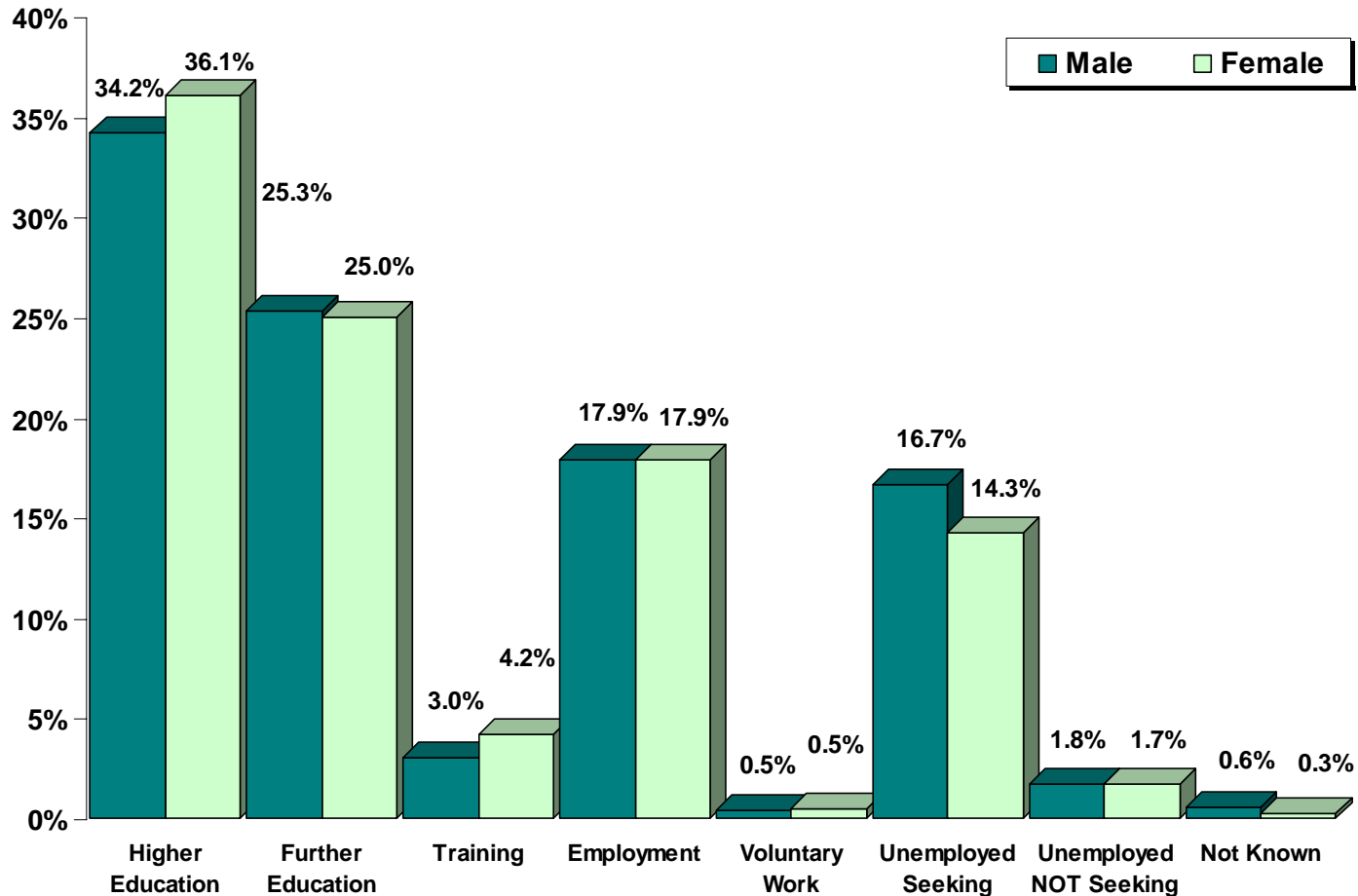


◆ Higher Education ■ Further Education ▲ Training
○ Employment ✱ Voluntary Work

10 Year Trends – Negative Destinations



Gender by Destination



Destination by Stage Left School

Stage of Leaving Destination	Statutory Winter Leaver	Statutory Summer Leaver	Post Statutory Leaver
Higher Education	1.7%	0.4%	48.2%
Further Education	21.0%	35.0%	23.8%
Training	8.4%	11.1%	1.2%
Employment	27.7%	18.3%	16.2%
Voluntary Work	0.2%	0.8%	0.4%
Unemployed Seeking	35.8%	30.9%	8.8%
Unemployed Not Seeking	3.8%	3.0%	1.1%
Unknown	1.4%	0.6%	0.2%
Total Leavers	15.8% (419)	18.6% (531)	65.6% (2493)

Top 5 Course and Employment Areas

Course Area (HE)	%	Course Area (FE)	%	Employment	%
Arts & Social Sciences	14%	General Education (Highers, etc)	18%	Sales & Marketing	32%
Science & Mathematics	14%	Construction	12%	Hospitality, Catering & Tourism	17%
Computing & ICT	7%	Social, Caring & Advisory Services	10%	Construction	11%
Admin, Management & Business	7%	Art and Design	8%	Hairdressing & Beauty	10%
Health & Medicine	6%	Performing Arts	8%	Social, Caring & Advisory Services	7%

Course Area (Male)	%	Course Area (Female)	%
Construction	14%	Arts & Social Sciences	11%
Computing & ICT	11%	Social, Caring & Advisory Services	9%
Sport, Leisure & Sport Science	10%	General Education (Highers, etc)	9%
Science & Mathematics	8%	Art and Design	9%
Engineering	7%	Science & Mathematics	9%

Employment (Male)	%	Employment (Female)	%
Sales & Marketing	29%	Sales & Marketing	35%
Construction	21%	Hairdressing & Beauty	19%
Hospitality, Catering & Tourism	16%	Hospitality, Catering & Tourism	17%
Garage Services	7%	Social, Caring & Advisory Services	14%
Security & Protective Services	5%	Admin & Management	9%

Unemployed Seeking Characteristics

Characteristics	% of Full SLDR	% of Unemployed Seeking
Gender		
Male	50.7%	54.5%
Female	49.3%	45.5%
Stage Left School		
Statutory Winter Leaver	15.8%	35.2%
Statutory Summer Leaver	18.6%	18.5%
Post Statutory Leaver	65.6%	46.3%
Qualifications on Leaving School		
Access 1 / No formal Qualifications	3.2%	10.1%
Access 2&3/Foundation Stand. Grade	3.3%	11.0%
General Standard Grade/ Intermediate1	18.0%	35.8%
Credit Standard Grade/ Intermediate 2	24.2%	25.7%
Highers/Advanced Higher	50.6%	17.4%
Unknown	0.7%	0.0%
Health And Additional Support Needs		
Additional Support Plan	1.0%	1.1%
Formerly Looked After/Care leaver	2.8%	8.1%
Health Factor/Additional Support Need Identified	7.4%	10.7%

SLDR Information Links

IIII SDS Local Authority SLDR Reports 2008-09:

<http://www.skillsdevelopmentscotland.co.uk/briefings.aspx>

IIII SDS Local Authority SLDR Reports 2007-08: <http://www.careers-scotland.org.uk/AboutCS/PartnershipWorking/PartnersAnalyticalReports.asp>

IIII Scottish Government - Destinations of Leavers from Scottish Schools: <http://www.scotland.gov.uk/stats/bulletins/00774>